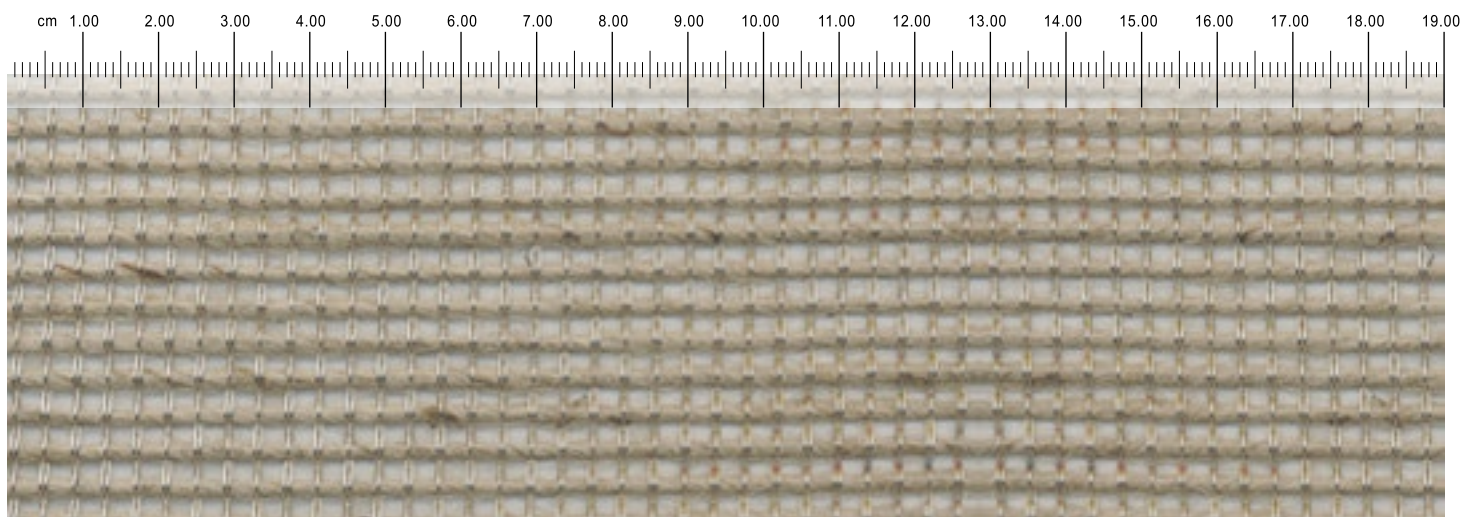


## TECHNICAL DATA

<i>Warp wire diameter</i>	<b>0,35 mm</b>
<i>Weft wire diameter</i>	<b>Juta Titolo 1</b>
<i>Thickness</i>	<b>0,50 mm ca</b>
<i>Open surface</i>	<b>40% ca</b>
<i>Weight (Kg/m2)</i>	<b>1,00 ca</b>
<i>Standard Width</i>	<b>1.500 mm</b>
<i>Maximum Width</i>	<b>4.000 mm</b>

## MATERIAL

*Stainless steel + Juta*



SCALA 1:1

## CHARACTERISTICS

A product 100% recyclable, a perfect concept of Bio-Architecture. For ceilings, we suggest to use skimming light.

### Applications

Panels, ceilings, furnishing, glass laminated, exhibit.

### Manufacture and fixing

Fixed on 4 sides: double bend on fixing perimeter and clipping on wood frame; closed between two frames ( fixing with bi-component glue, screws and rivets).

### Maintenance

Air jet cleaning .

### Fire behaviour

Not fireproof.



Furnishing



Furnishing

