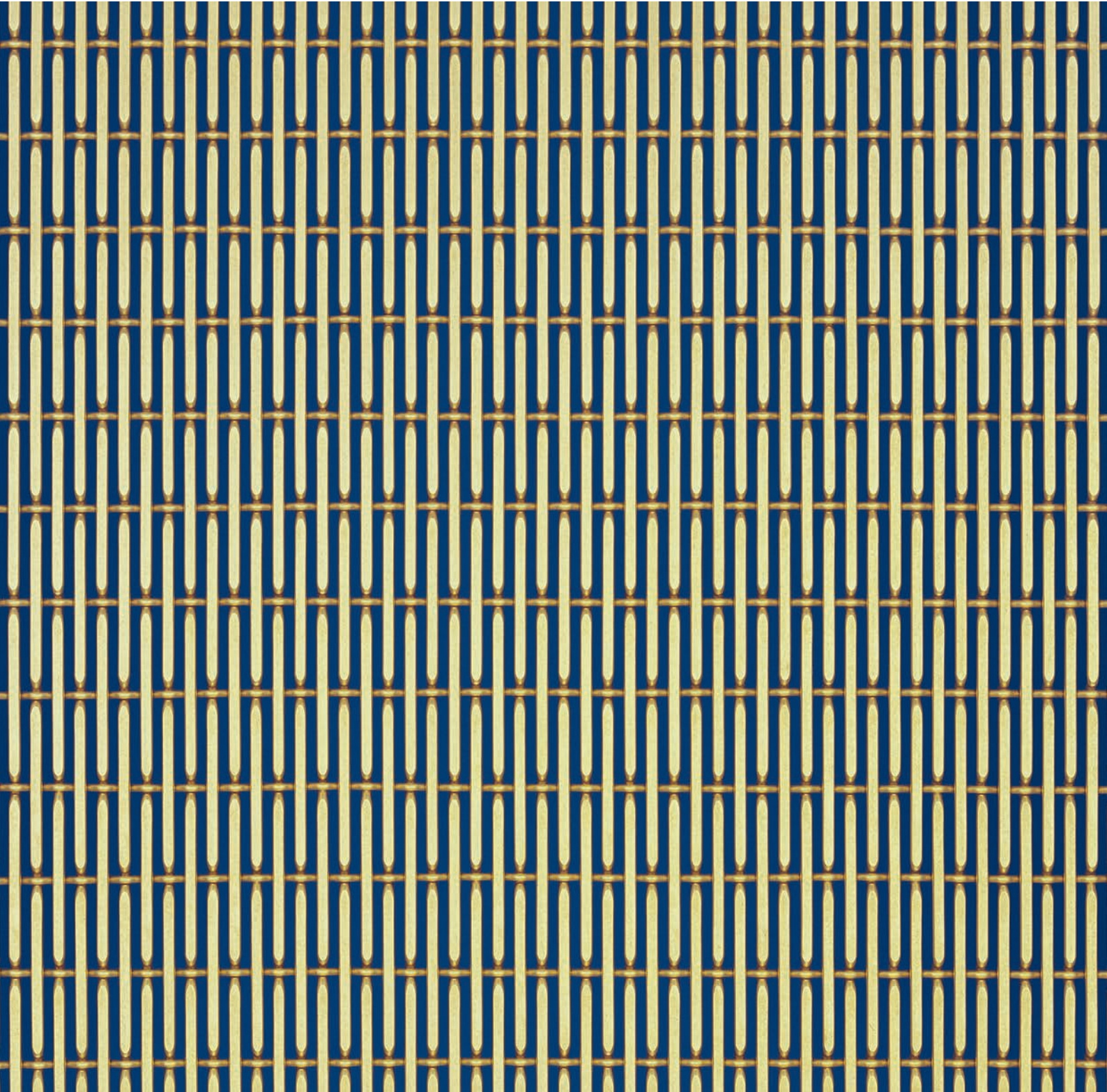
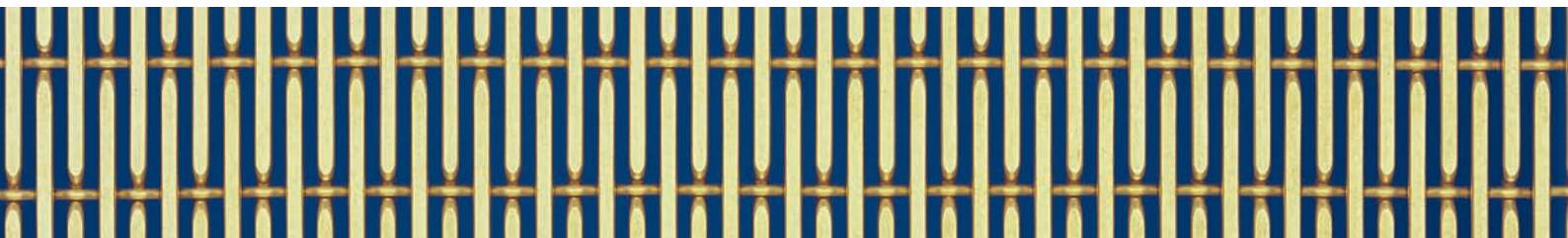




# ALU 6010





M=1:1

# ALU 6010

## TECHNISCHE DATEN

TECHNICAL DATA SHEET | FICHE TECHNIQUES | INFORMACIÓN TÉCNICA

<b>Werkstoff</b> Material   Matériau   Material	<b>Aluminium</b> Aluminium   Aluminium   Aluminio	
<b>Freie Fläche</b> Open area   Surface ouverte   Superficie abierta	ca. 45,7%	
<b>Drahtstärke</b> Wire diameter   Diamètre des fils   Diametro de hilos	<b>Kette: 2 mm</b> Cable   Câble   Cable	<b>Schuss: 1,5 mm</b> Rod   Tringle   Varilla
<b>Teilung Draht 2 mm</b> Wire Pitch   Entraxe tringle   Paso trama	4 mm	
<b>Teilung Draht 1,5 mm</b> Wire Pitch   Entraxe tringle   Paso trama	17,5 mm	
<b>Dicke Gesamtgewebe</b> Thickness   Epaisseur   Espesor	ca. 3 mm	
<b>Gewicht</b> Weight   Poids   Peso	ca. 2,5 kg/m <sup>2</sup>	
<b>Standardbreite</b> Standard width   Largeur standard   Ancho standard	1,3 m	
<b>Standardlänge</b> Standard length   Longueur standard   Largo standard	2 m	
<b>Standardbefestigung</b> Standard fixing detail Fixation standard Sujeción standard	<b>Klemmprofile</b> Clamping profiles Profils de serrage Perfiles de aprieto	

**KO & CO**  
Architectural Complements

KO & CO BENELUX nv.  
Showroom  
Boomssesteenweg 41/10  
B-2630 Aartselaar  
Tel. (...32) (0)3 458 40 40  
Fax (...32) (0)3 458 40 00  
www.ko-co.com

**GKD – GEBR. KUFFERATH AG**  
Metallweberstraße 46  
52353 Düren  
Germany  
T +49 (0) 2421 803 - 0  
F +49 (0) 2421 803 - 227  
creativeweave@gkd.de  
www.gkd.de